

## CH.: 7 Transportation in Animals and Plants

I Technical terms:

## 1. Pulmonary artery:

Carbon dioxide - rich blood from right ventricle pumped through it to lungs for reoxygenation.

## 2. Pancreas:

An organ in our body that releases insulin which controls the metabolism of sugar.

## 3. Translocation:

Transport of food from leaves to the other parts of a plant.

II Multiple choice question:

1. The food prepared by the leaves is transported to every cell of the plant by Phloem.

a) Phloem, b) xylem, c) stoma, d) Root tissues

III Answer the following:

1. How is water transported in plants?

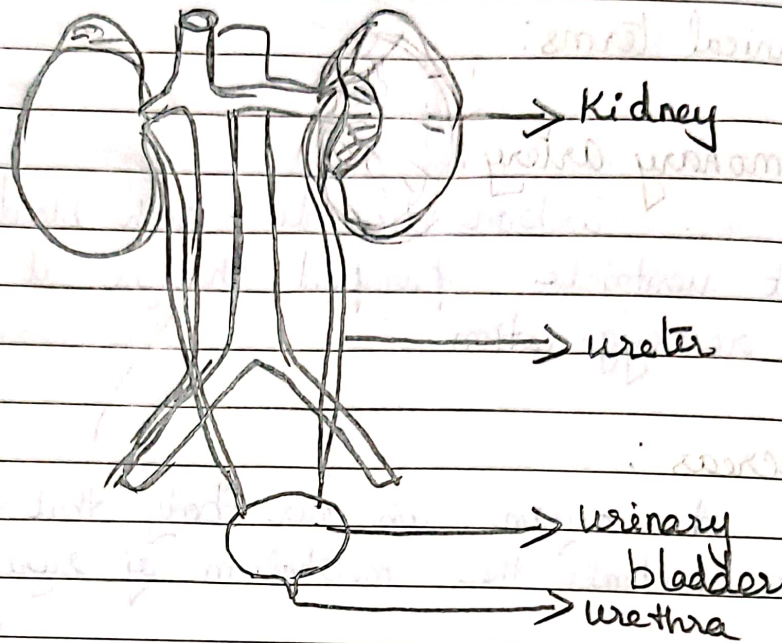
Ans i) Water is absorbed from the soil by the root hair.

ii) The root hairs are in close contact with water surrounding the soil particles.

iii) Water moves from root hair to the root tissues and then to the xylem in the root.

iv) The absorbed water then moves up the stem through the xylem.

2. Draw a neat labelled diagram of human excretory system.



#### IV Long Answer question

1. Name the three types of body waste and the corresponding system involved

Ans

(i) Solid waste:

The solid waste generated in the body is removed as faeces through the anus.

(ii) Liquid waste:

The liquid waste of the body is removed by the excretory system in the form of urine.

(iii) Respiratory waste:

The respiratory waste - carbon dioxide and water vapour are carried by the blood to the lungs. The alveoli in the



lungs remove carbon dioxide from the blood and it is exhaled through the anus.

## V HOTS

1. Why do veins have valves, whereas arteries don't have?

Ans i) Arteries do not have valves because the heart provides the pressure needed to send blood through the system.

ii) Veins have valves because they allow blood to flow only in one direction (i.e) towards the heart.

Ans  
9/10/23